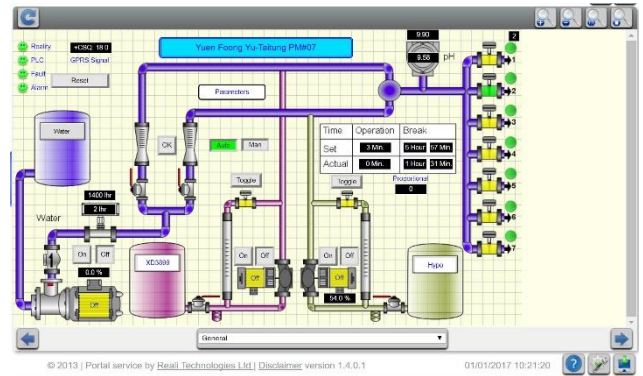


**Project Name: dozing Remote control system**

Some of our global chemical corporates customers Solenise, , provides, among other things, a dozing unit to control water quality in manufacturing plants around the world (hundreds of factories), and is responsible for operating them and for the regular supply of chemicals for these systems.

The project’s key challenge was to enable full monitor & control of a large number of dosing units located around the world with minimal manpower and maximum uniformity, and high reliability.

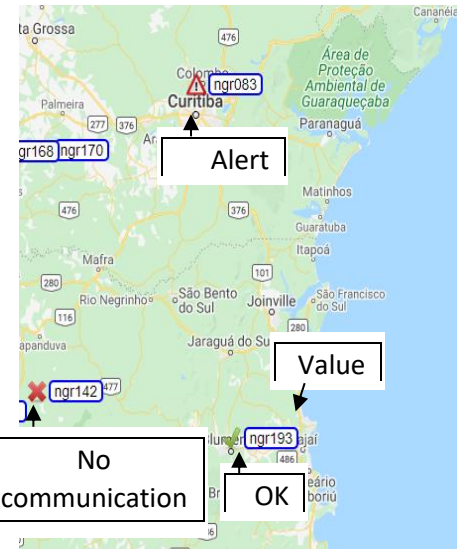
First installations have been done on 2009, and today we have already hundreds of dosing units spread all over the world in more than 40 countries in five continents.



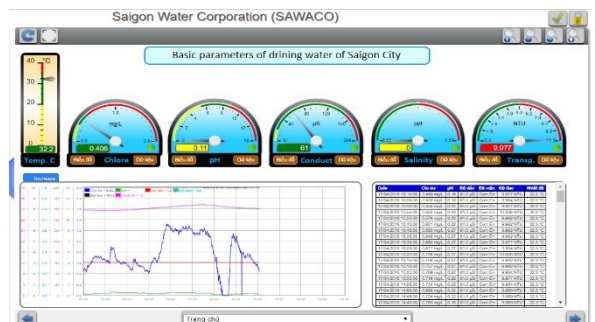
Dozing unit operation screen

**Unique capabilities:**

- ✓ **Geo map real time status** - Real-time Network status (Assets Health) in one shot on a map (can present also actual values)
- ✓ **Build in BI & statistical capabilities** - BI functions that use aggregated data and present, as part of the real-time system, the calculated results to be used in dashboards and all parts of the system.
- ✓ **Real-time Bi & multi directional communication** (monitoring & control)
- ✓ **No limits users and data** with no extra cost
- ✓ **Customized screens, dashboards & reports** – Personalization of screens as the UI offers easy build-in editor tool
- ✓ **Smart Alarms handling:**
  - Possible to define escalation mode (unlimited escalation steps)
  - Possible to configure “Nagging” for alarms (may also combine nagging + escalation)
  - Possible to monitor status and duration of alarms as part of the BI part
- ✓ **Reports & Trends:**
  - High flexibility by the user
  - Smart dashboards - Display inside a graphical screen several trends and tables
  - Timeframe - In graphical screens, it is possible to configure a dedicated time frame for each one of the trends/tables presented.



Geo map real time status of



Real time Water quality values visualization