

ICX-T245LTE-XX* and ICX-T255-IoT-M1

Getting Started

V 1.0

1. Outlook

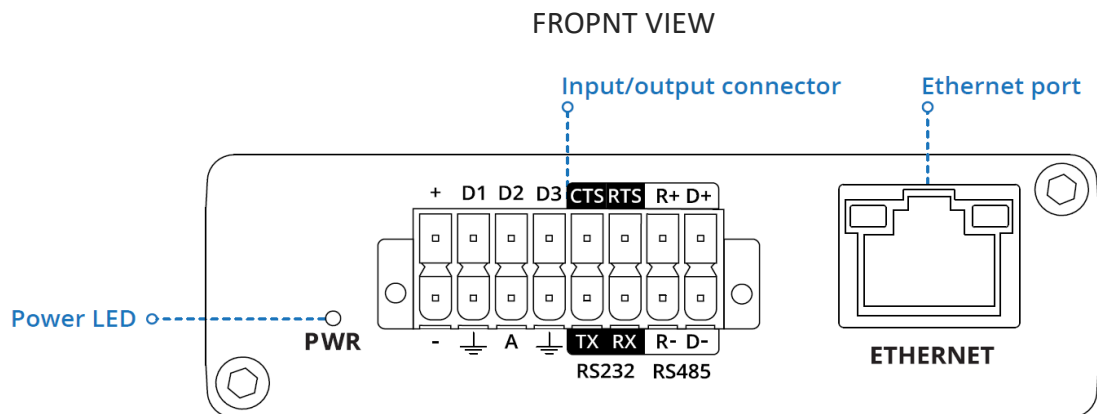


Fig. 1 iCex Front view

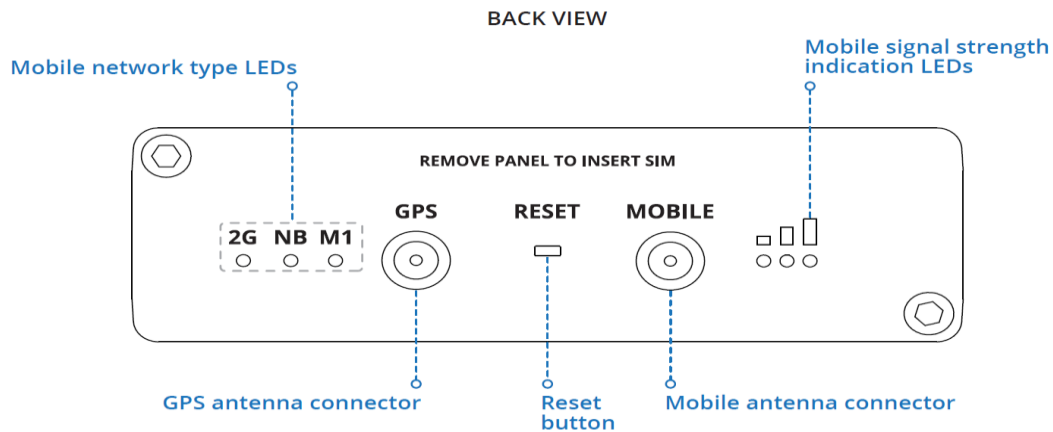


Fig. 2 iCex back view

Note:

Figure above is showing Mobile network signals, supported by **ICX-T255-IoT-M1** – 2G, NB, M1. In **ICX-T245-LTE-XX** supported signals, as stated on unit back panel are 2G, 3G and 4G.

Important:

Reset button can be used only by RealiteQ authorized personnel!!!

16 PIN CONNECTOR PINOUT

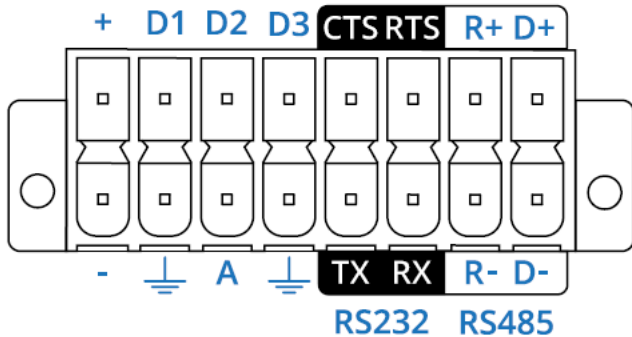


Fig 3 16 pin connector

* XX=EU, US, LA, CN

- + - 9-30 VDC positive power pin
- D1, D2, D3** - Configurable digital Input/Output pins. Open collector output, max output 30 V, 300 mA or Digital input, where 0-6 V detected as logic low and 8-30 V – logic high.
- CTS** - RS232 clear data to send pin (output).
- RTS** - RS232 request data to send pin (input).
- R+** - RS485 receiver positive signal pin.
- D+** - RS485 driver positive signal pin.
- - Negative/ground power pin.
- Ground pins for D1, D2, D3, A, RS232 and RS485.
- A** - Analog input pin. Analog voltage range 0-30 V.
- TX** - RS232 transmitted data (input).
- RX** - RS232 received data (output).
- R-** - RS485 receiver negative signal.
- D-** - RS485 driver negative signal.

2. Hardware installation (see Fig. 4 and Fig.5)

1. Unscrew two back panel hex bolts and remove the back panel.
2. Insert your SIM card(s) into the SIM socket(s), which are located on the bottom side of PCB.
3. Attach the panel and tighten the hex bolts.
4. Attach the mobile antenna (max torque 0.4 N·m / 3.5

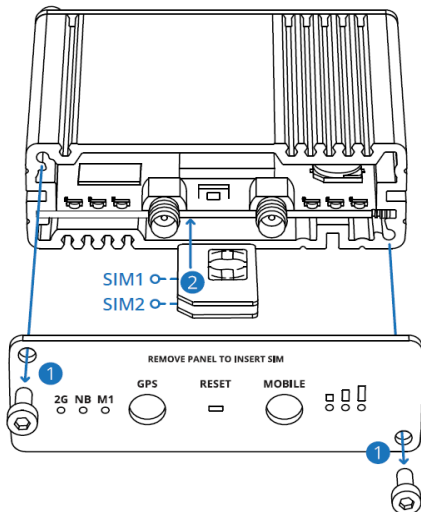


Fig. 4 Insert SIM card (s)

5. Connect 9-30V DC power to 16 pin terminal block:
 - a) red wire to top row first contact (+).
 - b) black wire to bottom row first contact (-).
6. Connect the 16-pin terminal block to gateway 16 pin connector and plug other end of the power

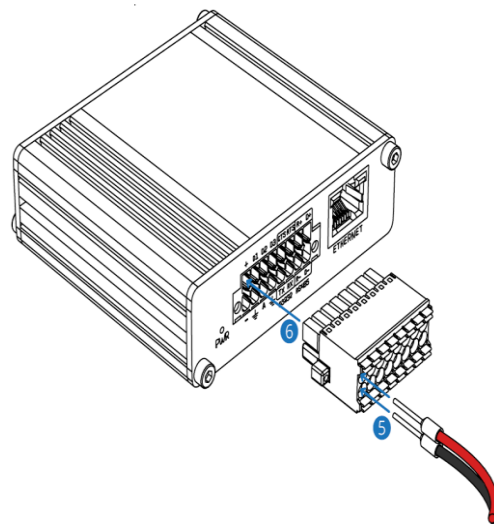


Fig. 5 Connecting 9-30V DC power

Notes:

- ICX-T255-IoT-M1 is running with RealiteQ only with SIMs, supporting cellular standard LTE Cat M1. Please be sure to insert only SIM cards, supporting this standard.
- In places with weak and unstable cellular signal it's recommended to insert two SIM cards from different providers to obtain redundancy and as result – better connection.

3. Installing compact DIN rail kit

To install DIN rail kit to any track of iCex:

- Select track in iCex, which will let you best installation of iCex in your cabinet
- Move the kit to the track in iCex as shown in the Fig. 7.
- Use screwdriver Philips 2 x 100 to screw both inserted in the kit screws.



Fig. 6 DIN rail mount kit

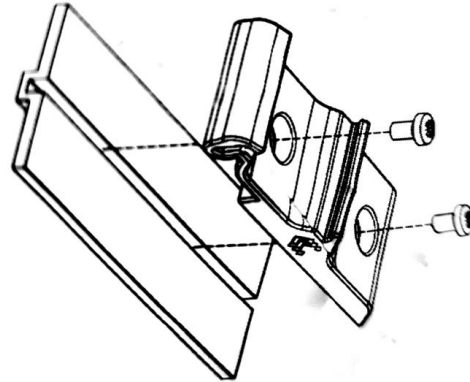


Fig. 7 DIN rail kit mounting

4. Device configuration

- Insert SIM cards as shown in figure 4. Default try is bottom (tray 1)
- Power on the device and connect the Ethernet cable to your computer.
- Allow the gateway to boot up. This might take some time. At the end mobile signal strength LEDs will stop blinking and will show actual signal strength.
- Set manually IP of **your computer to 192.168.16.200**.
- To enter the gateway Web interface type unit's IP:**192.168.16.202** into the URL field of your browser. This will open unit's user interface.



Login	Main	Driver - 1	Driver - 2	Driver - 3	Status	Files	Trace
<div> <div> <div>User name</div> <input type="text"/> </div> <div> <div>Password</div> <input type="password"/> </div> <div> <div>Login</div> </div> <div> <div>Change login detail</div> </div> </div>							

Fig. 8 Login Tab of iCex UI

- Log in with username **icex** and password **icex**. Username and password are case sensitive.

Note: Login expires after 30 minutes or after restart iCex. You will be prompted to re-login.

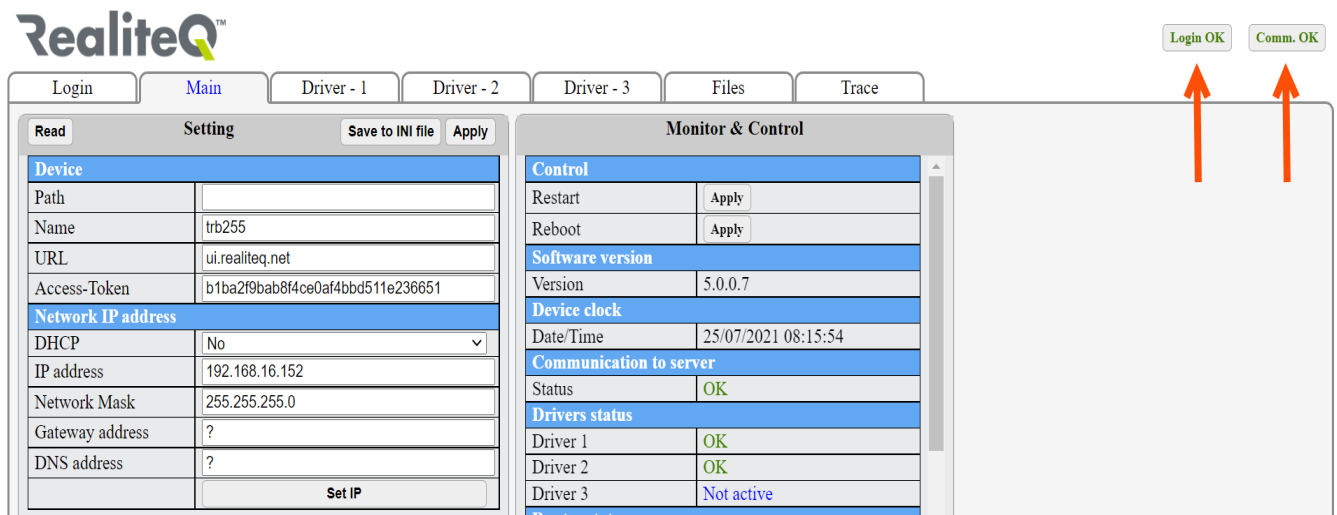


Fig. 9 iCex UI – Configuration tab

- g. After successful connection and login the relevant signs in upper right corner of display change to green. User interface switched automatically to **Main** tab (Fig 9). You are entering the **Configuration UI** and set relevant parameters.
- h. When you set/change parameters within specific tab of Configuration UI, button Apply (1), (Fig. 10) changes to red. Apply on it before leaving the tab to save settings.

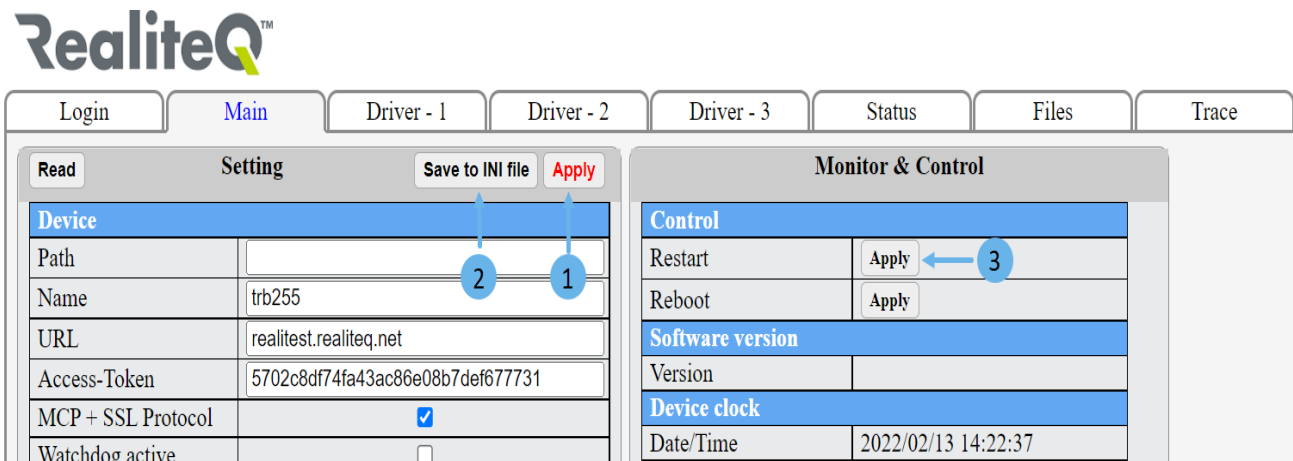


Fig.10 **Apply** changes, **Save on INI file** and **Restart** iCex

- i. After finishing **all** settings apply on **Save to Init file (2)** to save changes in iCex flash memory. Then apply on **Restart (3)** your changes to take place. See Fig 10: point 3.
- j. Check current status of iCex, , GPS position (in case GPS enabled) and built in I/O in **Status** tab. See Fig 11, point (1).
- h. Select function of embedded digital I/O – as Input or as Output (fig. 11; point 2)

RealiteQ™

Login Main Driver - 1 Driver - 2 Driver - 3 **Status** Files Trace

Setting Read Save to INI file Apply

Device	
DIO 0 type	Output ▼
DIO 1 type	Input ▼
DIO 2 type	Input ▼

Monitor & Control

Router status	
Connect state	Connected
Network state	registered (home)
Byte sent	391392
Byte recive	223690
Connet type	CAT-M1
Signal (DB)	-51
Operator name	HOT mobile
Operator no.	42507
SIM State	inserted
SIM number	8997207104184525467F
IMEI	867035049902727
Modem temperature	450
GPS	
Latitude	0.000000
longitude	0.000000
Altitude	0.000000
Speed	0.000000
I/O Status	
DIO 0	Off
DIO 1	Off
DIO 2	Off
Analog	267

Fig. 11 Status tab