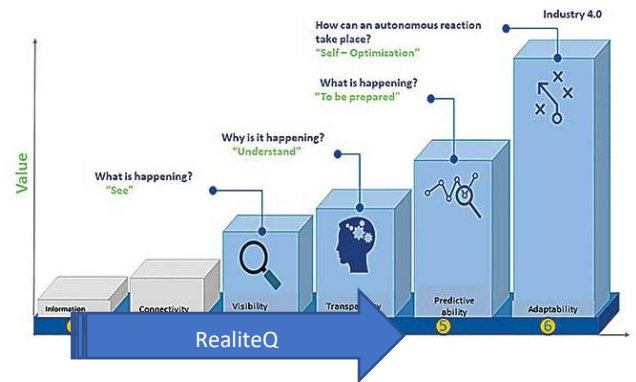


## RealiteQ 4.0 - your bridge to Industry 4.0

Realite Technologies Ltd. is an Israeli leader and pioneer company in IIoT & cloud technology since 2008, the developer & provider of cloud-based Real Time operational & managerial solutions, named RealiteQ - an A-to-Z cloud-based comprehensive real time, secured remote-control solution for operation & Data management. From the operational point of view Industry 4.0 revolution is more natural evolution of Industry 3.0. than revolution. The first two phases are still part of industry 3.0 but they are essential phases to Industry 4.0 pathway. RealiteQ is the bridge to Industry 4.0



The major barriers for adopting Industry 4.0 technologies, are: **Costs, Technology complexity & Security risks**

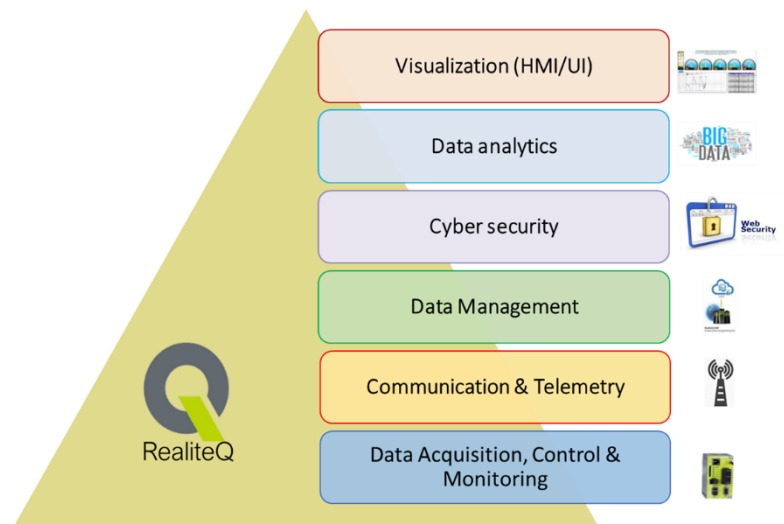
- **Cost** - RealiteQ 4.0 installation and maintenance costs are low and fit any size of factory
- **Technological complexity** - RealiteQ 4.0 is simple to install, easy to use and does not require maintenance
- **Security Risks** - RealiteQ 4.0 is a most secure system as it was built from the beginning for cyber.

**RealiteQ 4.0 eliminates the barriers while the benefits remain**

## RealiteQ 4.0 Single source solution

**IT/OT convergence** - RealiteQ 4.0 integrates information technology (IT) with operational technology (OT) used to monitor events, processes and devices, makes adjustments in networks sites, machines, enterprise and industrial operations and offers significant benefits in cost, quality, speed and reliability.

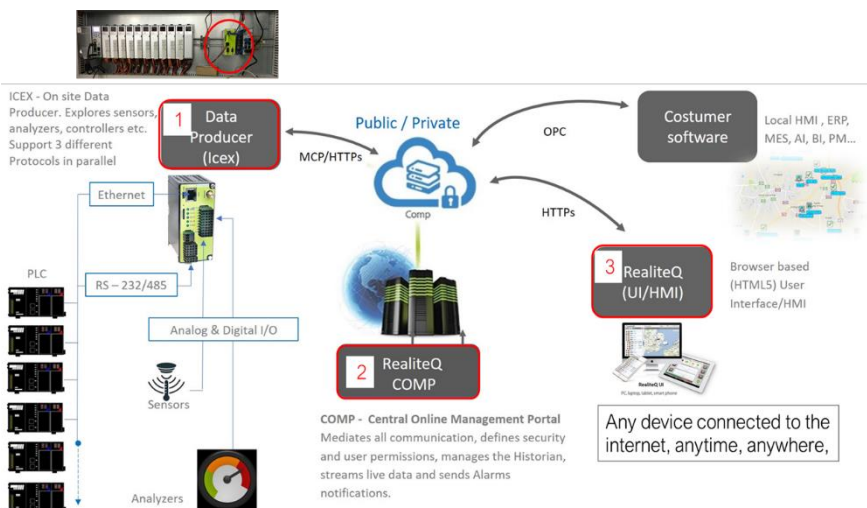
**Data management** - RealiteQ 4.0 is much more than just a remote-control system, it is a real-time data management system from A to Z, from the data acquisition to Big data analytics. By using RealiteQ 4.0 you are not only operating and controlling the system in real-time, but you also can use the data to increase the efficiency.



**RealiteQ 4.0 – Single source comprehensive smart & simple system**

## RealiteQ 4.0 - your solution for managing plant floor

RealiteQ 4.0 via its iCex end unit a Data Producer that explores sensors, analyzers, controllers etc. over I/O, Ethernet, or Serial protocols, and link them to the internet by any wire, cellular, satellite or other connection. Support most of the main industrial protocols and can be connected to different devices using up to 3 different protocols in parallel what makes the system very cost effective, simple to install with no maintenance.

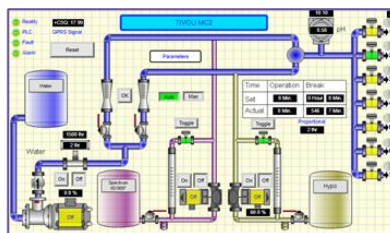


## RealiteQ 4.0 connect it all - everything you can think of... and more

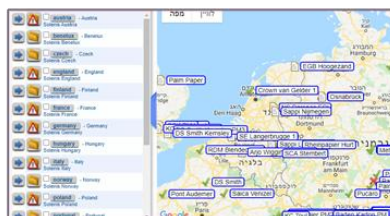
Controlling the production floor is important, but what with all the rest? Controlling all the Peripheral equipment reduce operation risks & increase efficiency & Safety!

RealiteQ 4.0 can connect any facility anywhere to one central system makes real time information available also to the corporate headquarter.

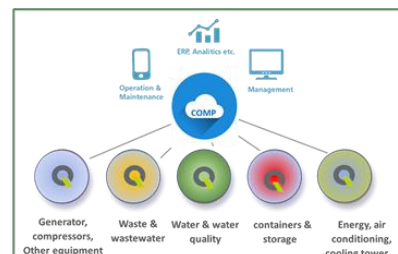
RealiteQ 4.0 Geo-map and Assets Health – allow authorized managers to have a Real-time view of all the facilities status (Assets Health), machines or devices in one shot on a map (can present also actual values).



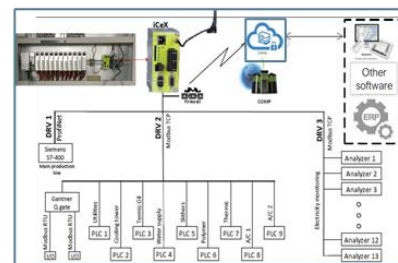
**OEM remote control for machinery & equipment**



**Global facilities**



**Peripheral equipment**



**production floor**

**RealiteQ 4.0 – for your plant safety & efficiency**