

Why RealiteQ?

Businesses, organizations, municipalities and service providers that operate and maintain distributed facilities such as gas, water, and sewage systems, as well as manufacturers or facilities supplying air conditioning, steam power, or water treatment services all need regular access to their remote systems.



**Remote operation & system
management**

Now, more than ever

COVID-19

The coronavirus burst into our lives in early 2020.

It has affected the way we conduct our lives, and it seems that in some domains, like facility management, this change is permanent.

The challenge

Facilities and factories must function at full capacity, reliability, and efficiency despite restrictions and the inability to fully staff control & monitoring centers.

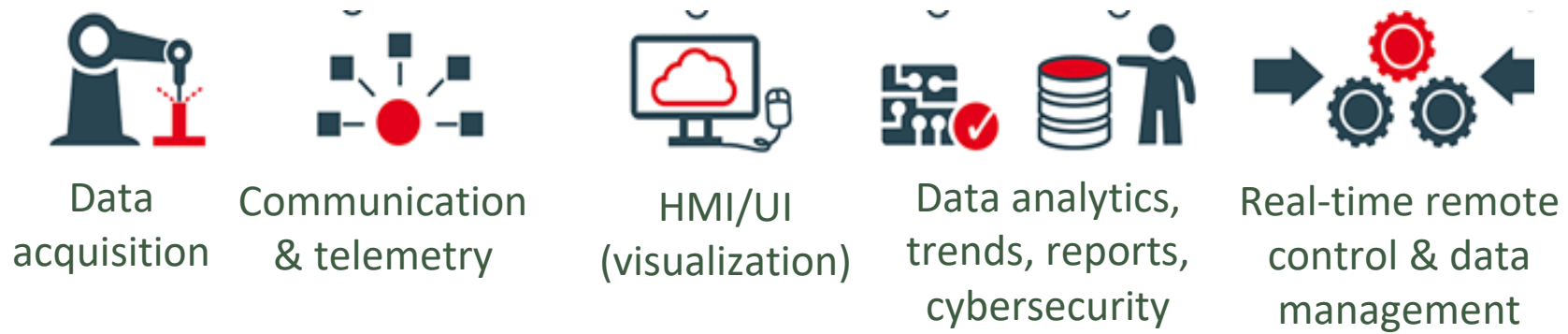
Safe solution

RealiteQ allows full & safe remote operation by authorized personnel anywhere (including from at home), anytime (365 days a year, 7 days a week, 24 hours a day) and via any device (PC/tablet/smartphone.)



Safety - Security - Integrity

What we offer



RealiteQ is a secure, comprehensive, A-to-Z, cloud-based, real-time remote-control operation & data management solution

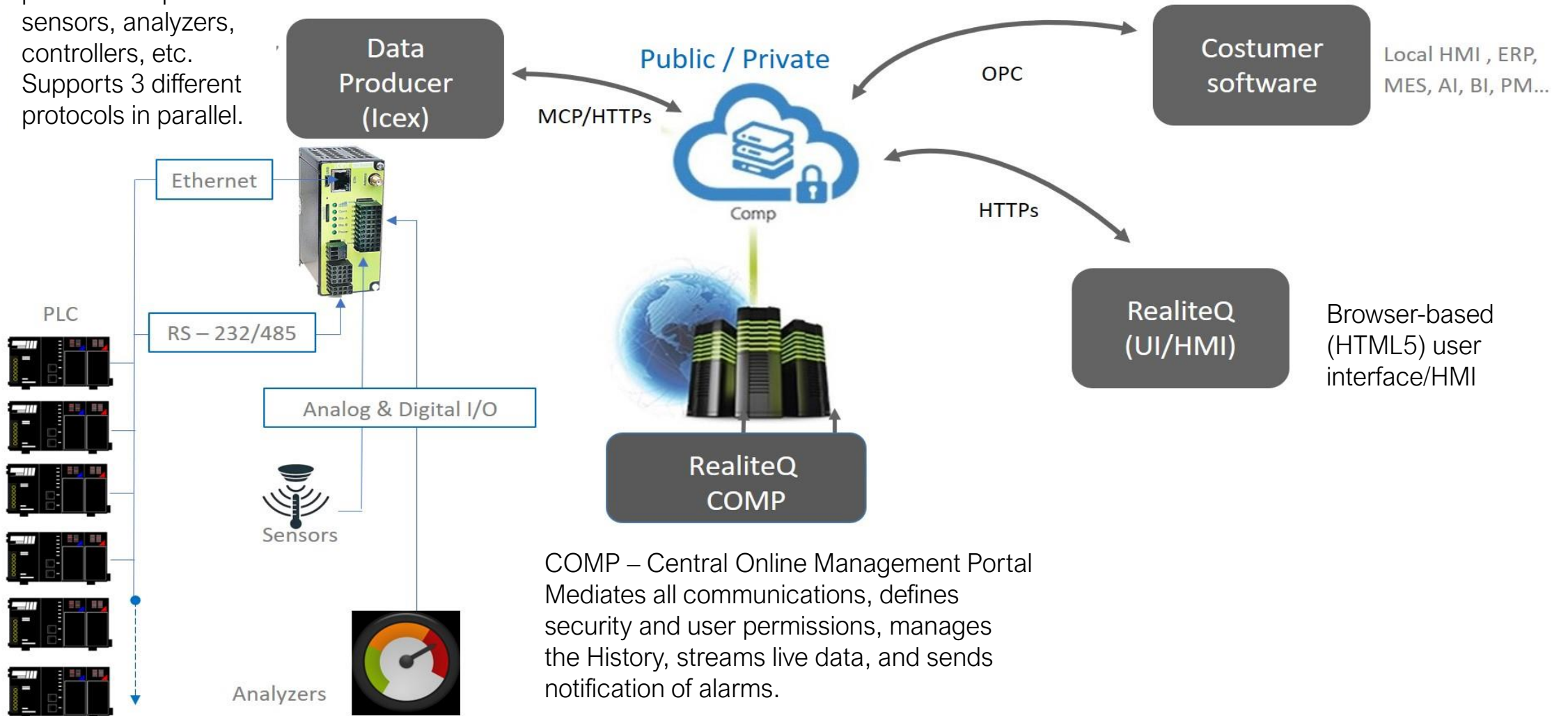


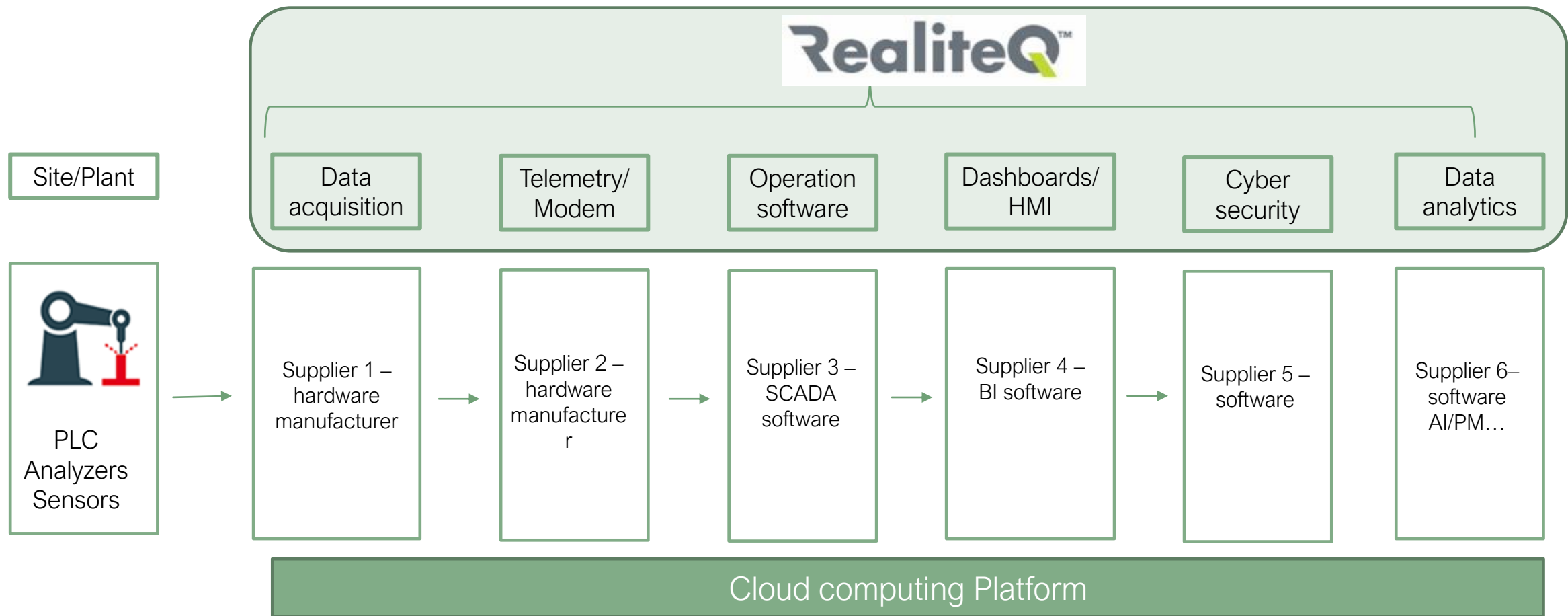
Single-source – Holistic solution

Hardware & SaaS

RealiteQ architecture

iCex – On-site data producer. Explores sensors, analyzers, controllers, etc. Supports 3 different protocols in parallel.



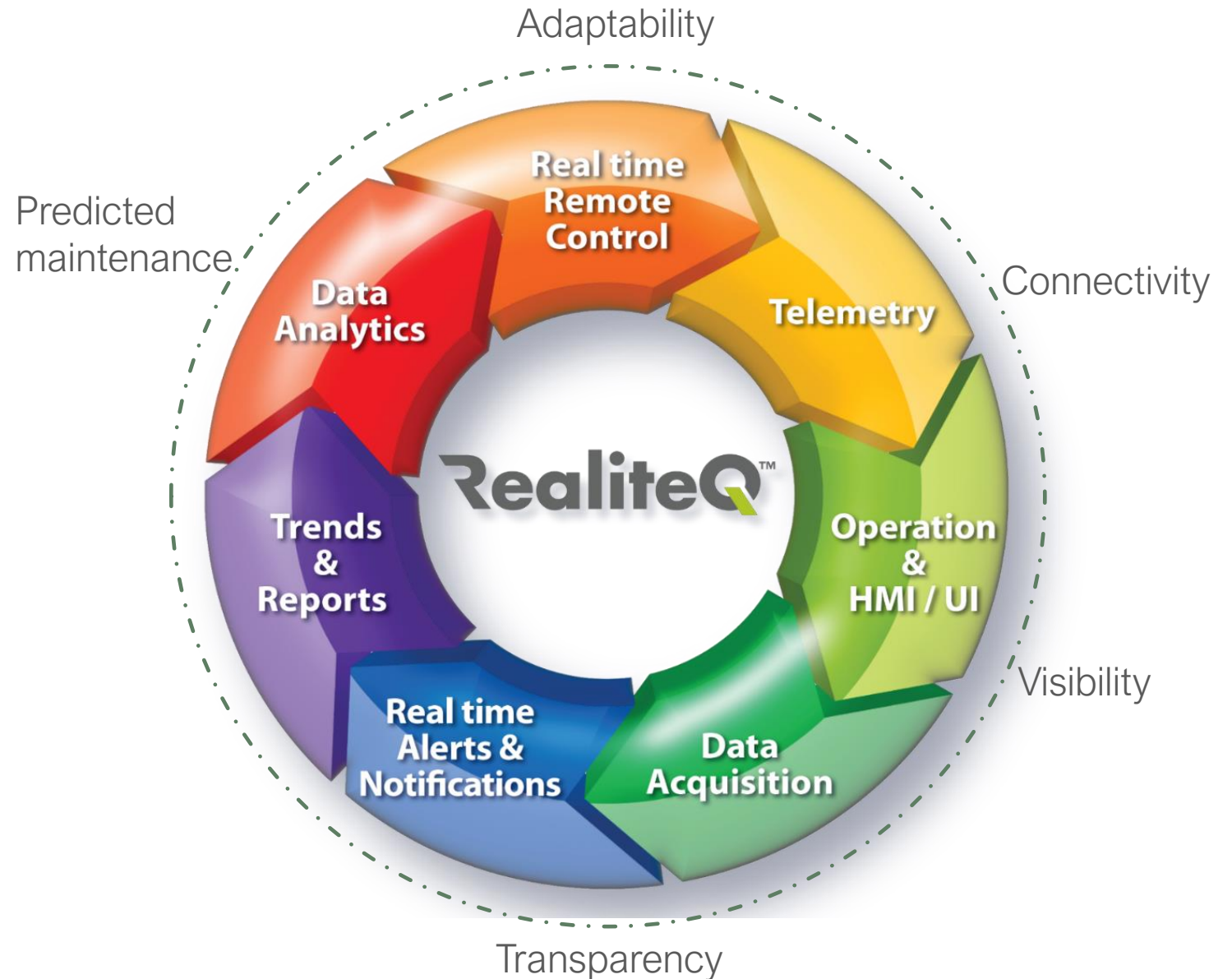




integrates information technology (IT) with operational technology (OT) and offer significant benefits along the four strategy operative dimensions:

- Costs
- Quality
- Speed
- Reliability & security

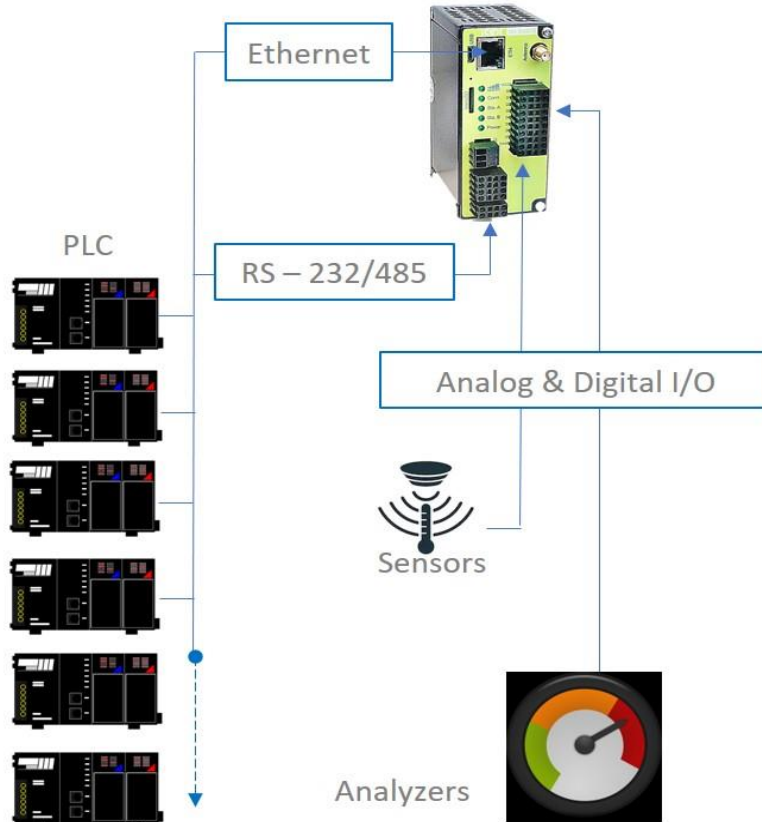
OPERATION & DATA MANAGEMENT FROM “A” TO “Z”



REALITEQ COMPRÉHENSIVE SOLUTION CONCEPT (3 COMPONENTS)

ICEX - On site Data Producer. Explores sensors, analyzers, controllers etc. Support 3 different Protocols in parallel

1 Data Producer (Icex)



Public / Private
MCP/HTTPs



COMP - Central Online Management Portal
Mediates all communication, defines security and user permissions, manages the Historian, streams live data and sends Alarms notifications.

OPC

Costumer software

Local HMI , ERP, MES, AI, BI, PM...

HTTPs

3 RealiteQ (UI/HMI)

Browser based (HTML5) User Interface/HMI



Any device connected to the internet, anytime, anywhere,



WIDE RANGE OF APPLICATIONS



Water - Sewage - Renewable & conventional energy
- G & O - Agriculture - Smart industry - OEM - BMS -
Energy efficiency - Smart city - And more...



Case Study I:

Natural gas

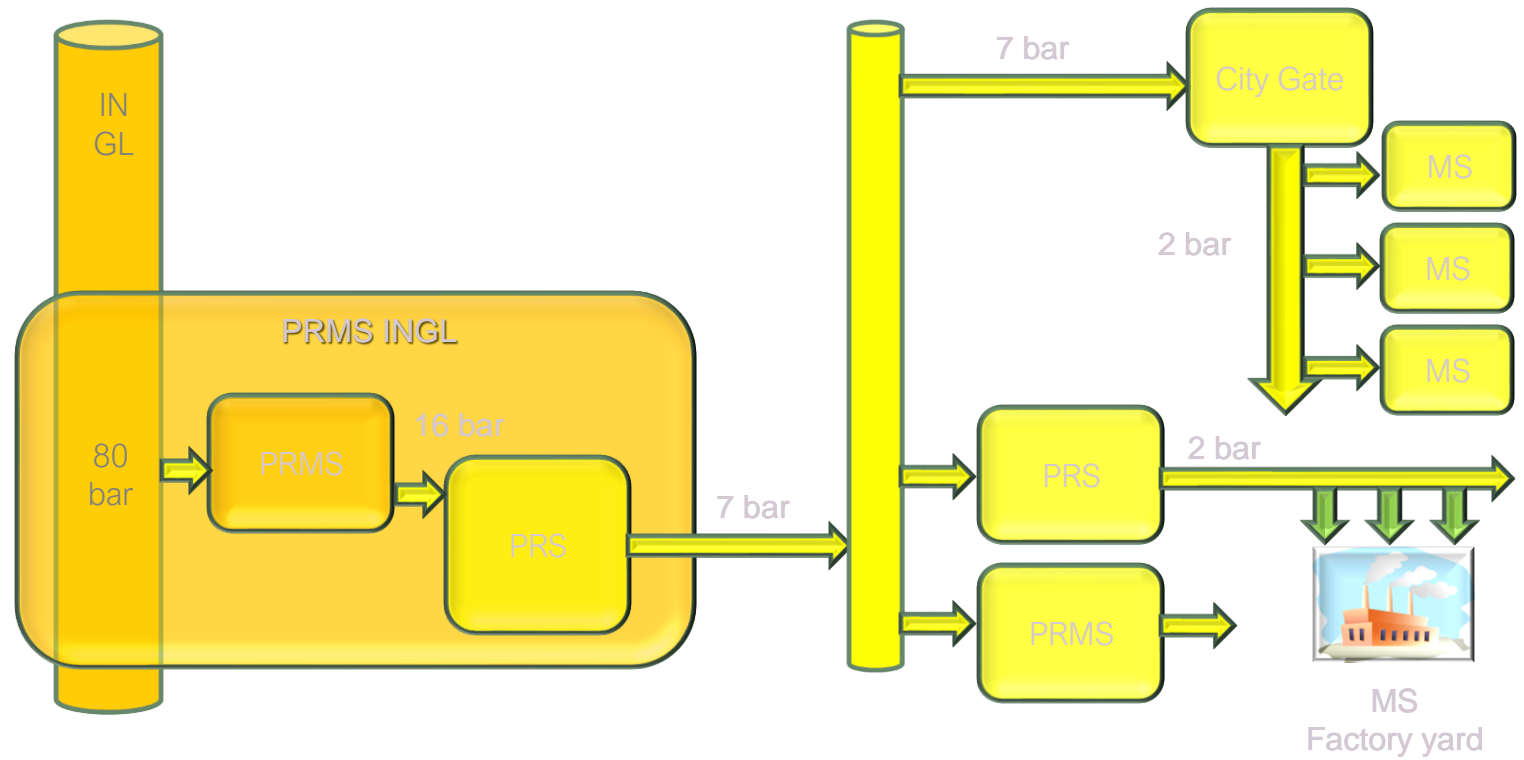
Monitoring

Reporting

Billing

Anomalies

PM



Case Study II:

Chemical dosing

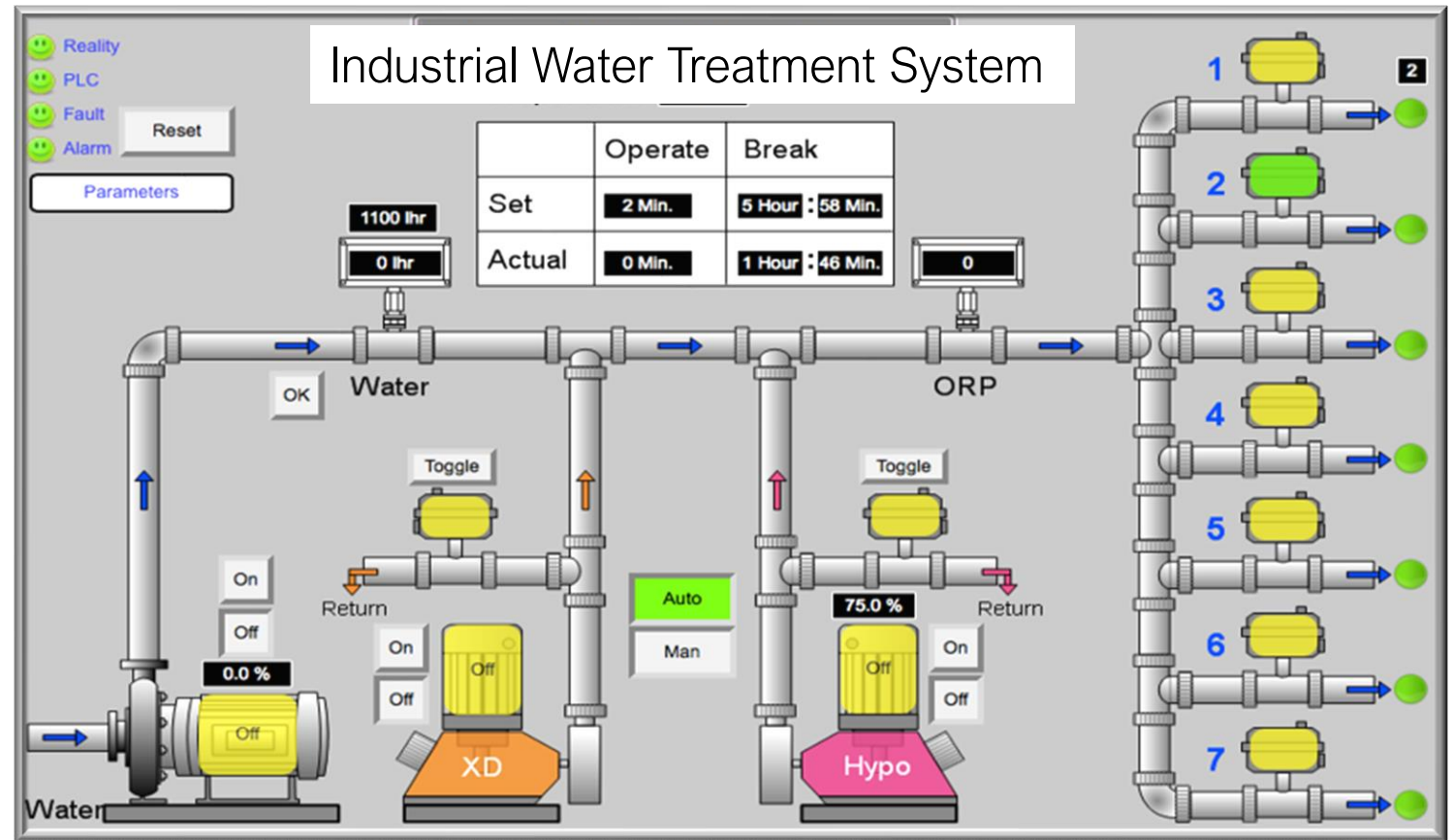
Dosing

Monitoring

Reporting

Anomalies

Optimization



Case Study III:

Smart Water & sewage Network

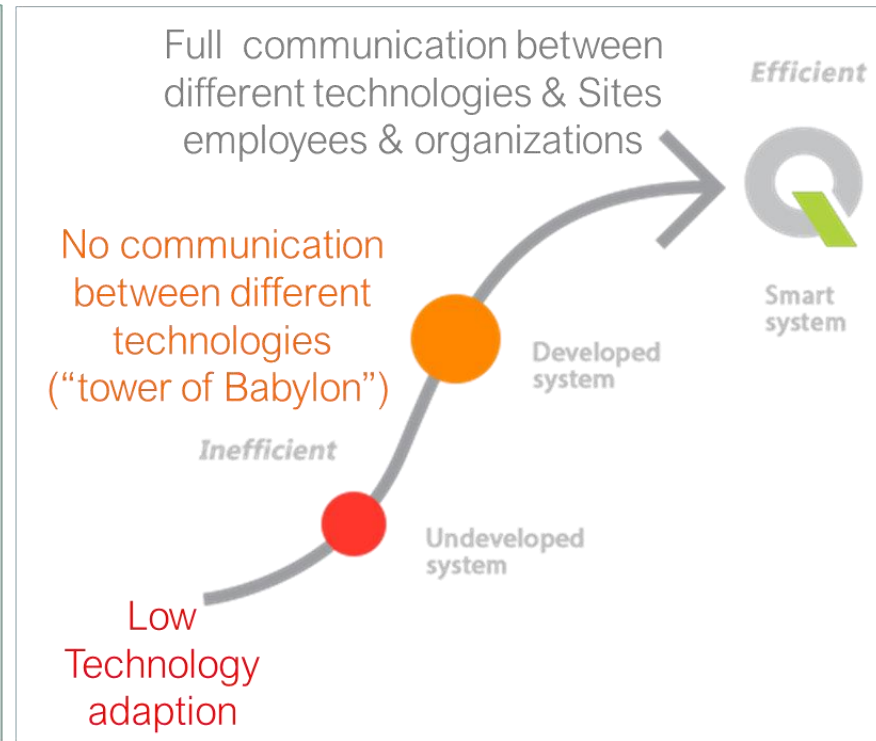
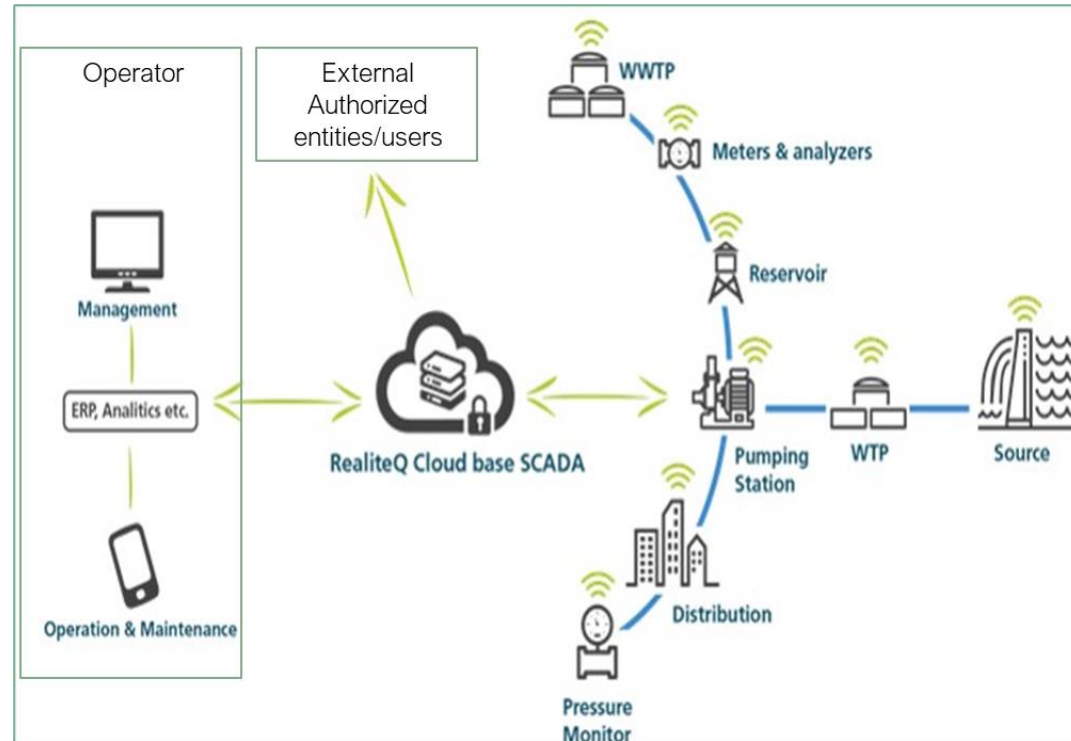
Monitoring

Controls

Reporting

Anomalies

Efficiency &
Quality



Case Study IV:

Electricity/energy

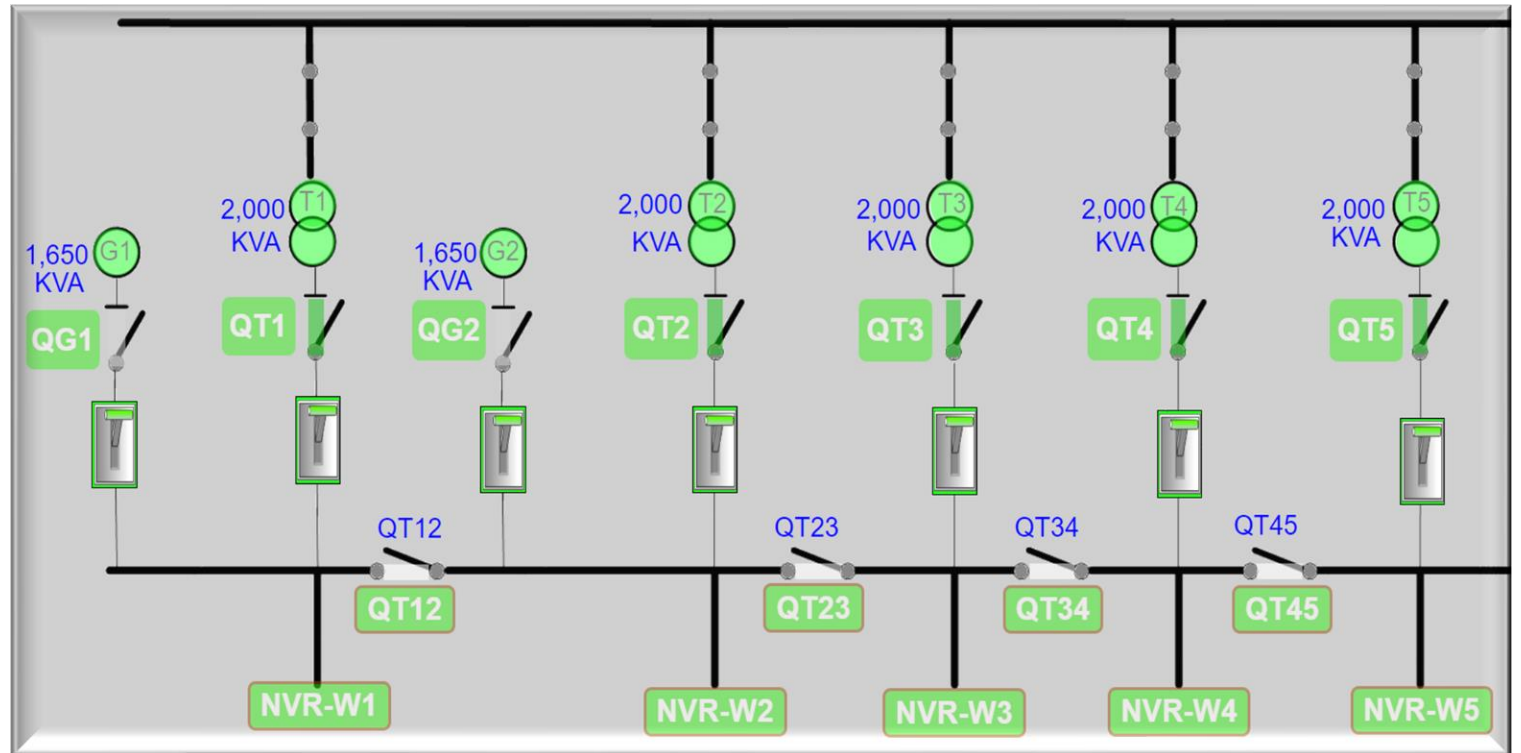
Monitoring

Reporting

Billing

Load Shedding

PM



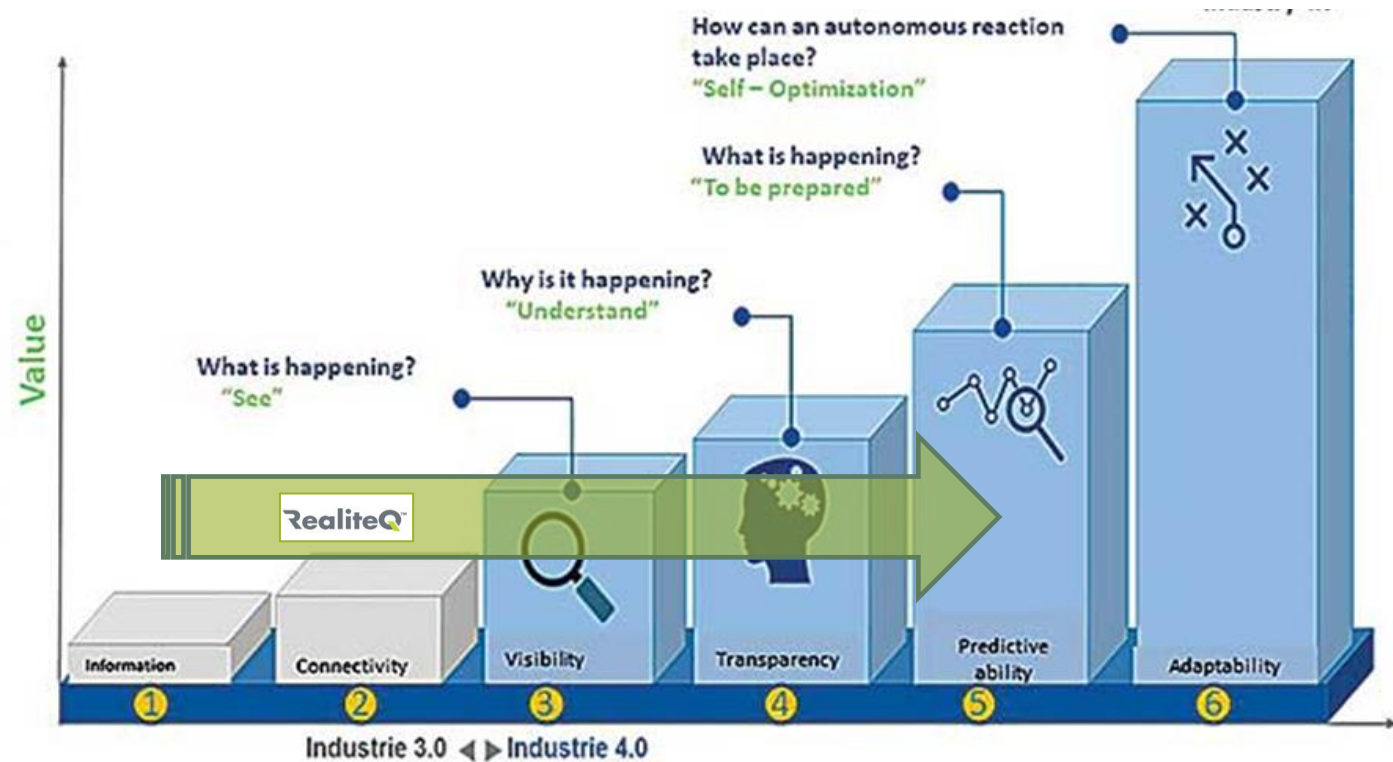
Efficiency

Visualization

Data analytics

Safety

PM



Water

Wastewater

Electrical vehicles

BMS

Smart industry



Water

Wastewater

Energy

Gas

Agriculture



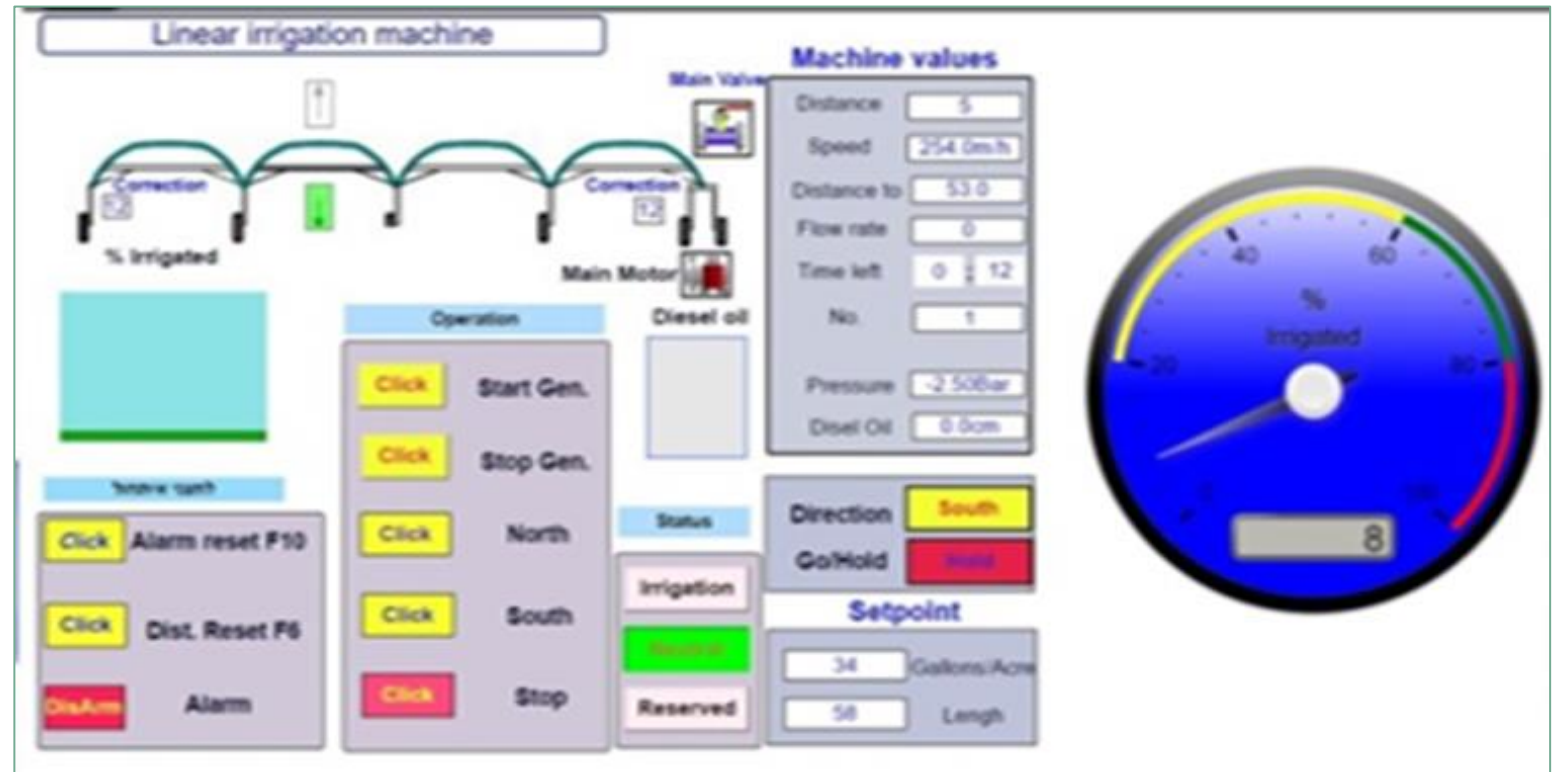
Monitoring

Reporting

Controls

Notifications

Trends



Global references

- Water supply
- Energy efficiency
- Natural gas
- VPP (Virtual Power Plants)
- EV - Charging stations
- Irrigation & Agro
- Cooling towers & systems
- Industry 4.0
- More...

Key Users & Deployment

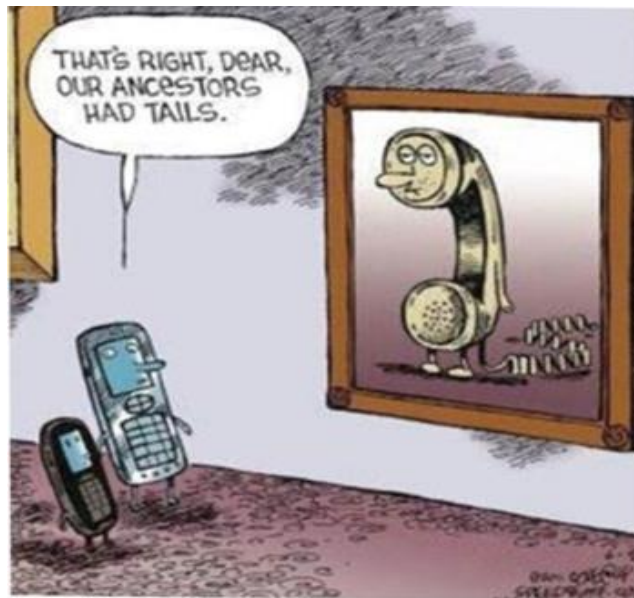


Thousands of sites
50+ countries, 5
continents

RealiteQ benefits

- No limits to the number of users, sites, or devices, or to the type of topography.
- Scalable & flexible.
- Cost-effective.
- Platform-agnostic.
- Non-destructive rapid deployment.
- Highly secured.
- Robust & Resilient.

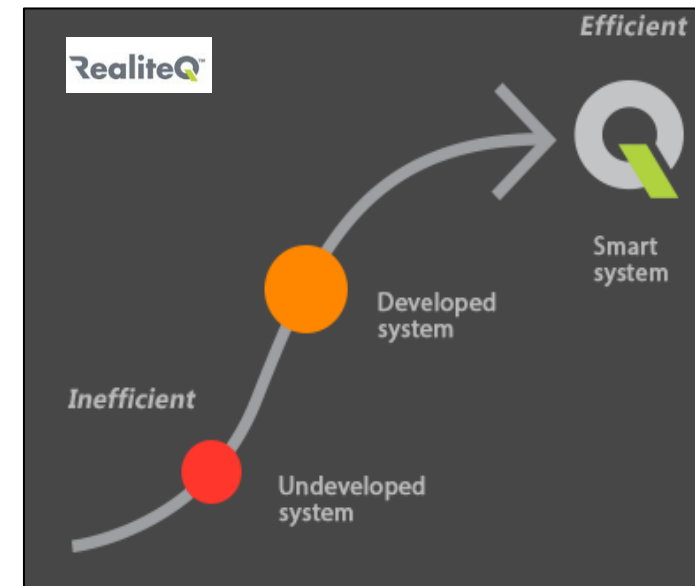




The future is already here

For more
information, please
contact:

Reali Technologies Ltd.
realinfo@RealiteQ.com
www.RealiteQ.com



RealiteQ – It's all about efficiency

RealiteQ™
Real Time Remote Control and Monitoring

SMART-SIMPLE-AFFORDABLE

